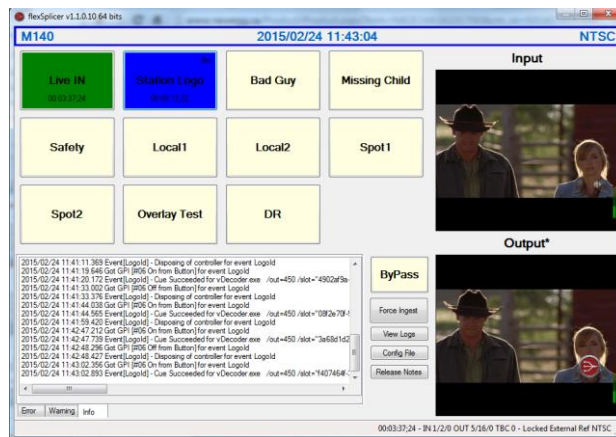


flexSplicer is a specialized media player which has the capability to play content at specified times and QC the media before playing it. flexSplicer enables localization of a television station by automating the insertion of the station ID or by covering over components of a national pass through feed with local content to perform ad or program insertion.

Typical uses are in a satellite, cable network, or spoke and hub environments where the national content must be adapted to local markets. flexSplicer integrates many features that make it easy to use and helps ensure the integrity of the on air signal.

- Connect your satellite IRD or video source directly to flexSplicer and let it output your signal locked to your reference sync.
- The Internal TBC (time base correction) component of the product will let you accept various video sources and reduce the number of gears required for an installation.
- A signal detection feature automatically detects black/frozen/silence/invalid signal and switches the output to a local clip to cover the discrepancy and then switches back to the source when the signal is good again. This feature is perfect for satellite outage and other technical difficulties.
- A relay bypass feature ensures the pass through signal will continue to your viewers if the hardware device is powered off or if there is a technical problem with it.



- Up to 32 events can be programmed to switch the main live source or overlay graphics from various media. Main live source signal, up to 2 other external live sources, video clips, logos and QuickTime\* animations are supported. All events are always ready to switch at the next frame!
- Control splicing and overlays with GPIs, Video GPIs, SCTE-35/104 messages, Cue Tones or manually with the user interface. Video GPI is Marex's proprietary and easy to use "work anywhere GPIs" that can be used as a secondary path to carry SCTE-35 splice commands through active video that has no effect on other devices but will work where SCTE-35/104 is not possible.
- An event can support playlist following the BXF and SCTE-118 schedule format to get break timing window and spots to insert driven by SCTE-35/104 messages or any other supported GPI. Use other events to auto trigger station logo ID or other overlays that are secondary events not part of ad insertion scheduling.
- Built-in auto triggering (simple scheduling) is also available to automate triggering of events without external signals or use a self-running playlist for more complex scheduling needs
- Update local content at any time using the built-in FTP server. Content gets ingested by going through a basic optional quality control step.

## Features Summary:

- Live input with Time Base Correction to external reference – connect directly to an IRD.
- Up to 3 live inputs to switch from, main feed and two extra ones.
- Up to 32 events ready to play exactly when told to - no frame delay from GPI reception.
- Events can be live inputs, video clips or overlay (still or animated graphics).
- Trigger events by schedule, GPI, SCTE-35/104, Video GPI and UI buttons.
- Two operating modes for each event: Single Media mode and Playlist mode (BXF, SCTE-118).
- Playlist mode lets you control when events cue up during the day based on time periods but play them only when the event gets its trigger. Support for ProgId/AvailNo insertion.
- Relay bypass to ensure full pass through mode when doing software or hardware maintenance.
- Automated software update under your control in push or poll mode.
- Emergency event that runs when the live feed is invalid auto resumes when it's back. Perfect for satellite outage in some regions.
  - No Signal or Wrong Signal
  - Black with silence
  - Frozen Frame with silence
- Extensive health and logging that can inform you of many situations by eMail.
- Monitoring of the live input feed with vuMeters.
- Monitoring of the output with vuMeters or the physical output using an SDI loopback cable to the second input to provide a real physical output monitoring.
- Ingest new content for events by FTP or HTTP (push or pull mode) and control when new content gets used next.
- Basic Quality Control on ingested content to ensure issues are detected before it's too late.
- Control two different eMail destinations to better manage support.
  - QC for Quality Control related notifications
  - Health for system level notifications

## Specifications:

- Supermicro 1RU short depth chassis
- XEON E3-12XX V3 with ECC memory
- Windows 7 x64 based server
- Dual 128GB SSD (mirror) or more upon request
- SDI and HD-SDI for all broadcast resolution up to 1080i
- External Ref (black burst or tri-level)
- 5 BNC DIN 1.0/2.3 mini – 3 inputs + 1 output or 1 input + 1 output with physical loopback monitoring and external ref
- Remote/Ethernet access with TeamViewer or local access with your own KVM hardware
- Runs unattended – no keyboard, monitor required.

Visit [marex.tv](http://marex.tv) to get additional information and a product demonstration.